

House 1 - North East Elevation
1 : 100



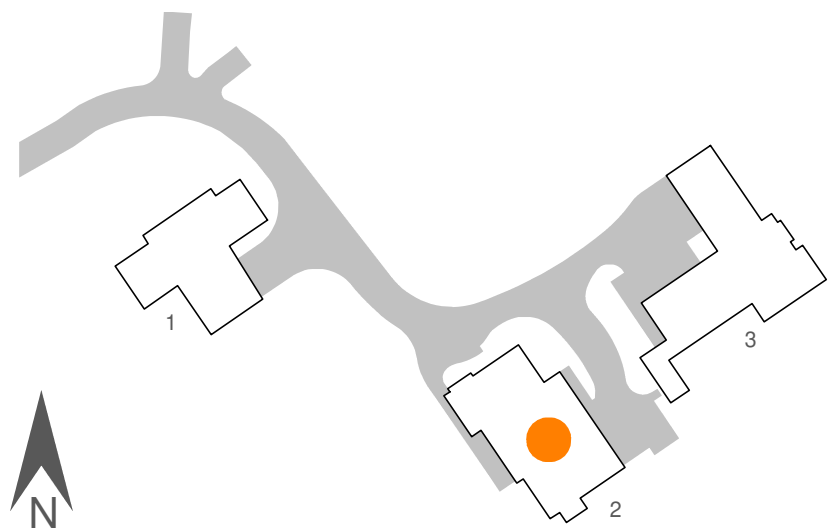
House 1 - North West Elevation
1 : 100



House 1 - South West Elevation
1 : 100



House 1 - South East Elevation
1 : 100



Key Plan
1:1000



House 2 - South East Elevation
1 : 100



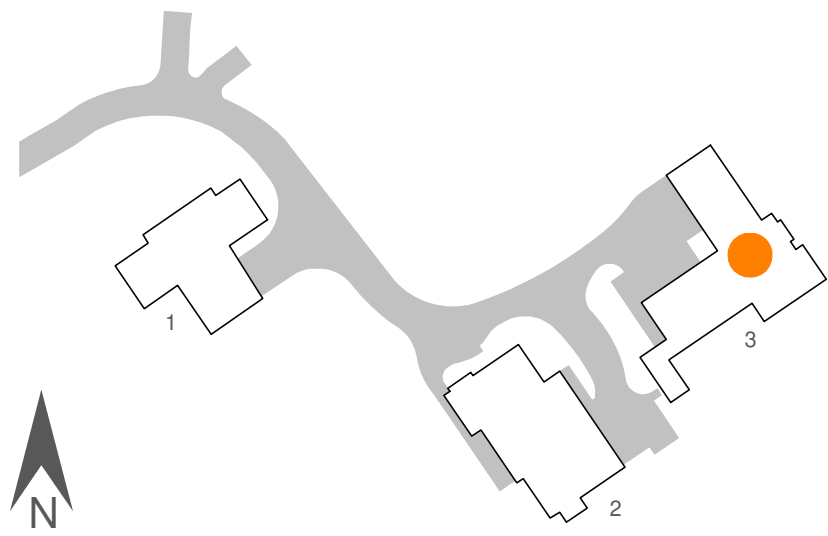
House 2 - North West Elevation
1 : 100



House 2 - North East Elevation
1 : 100



House 2 - South West Elevation
1 : 100



Key Plan
1:1000



House 3 - East Elevation
1 : 100



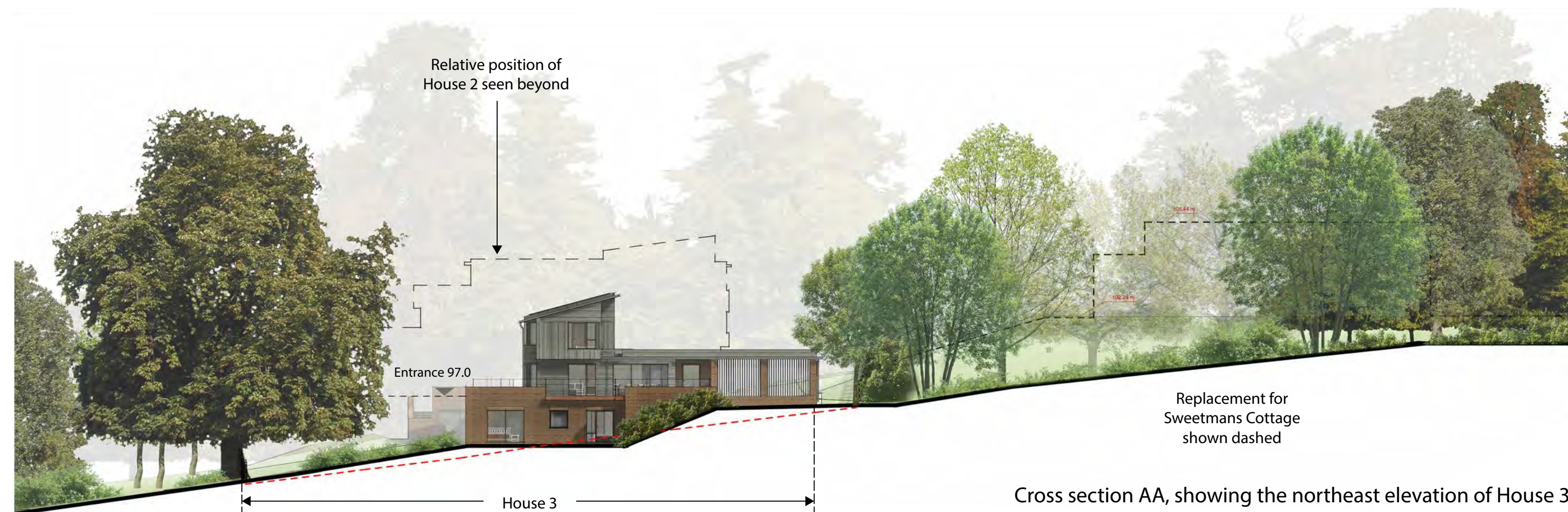
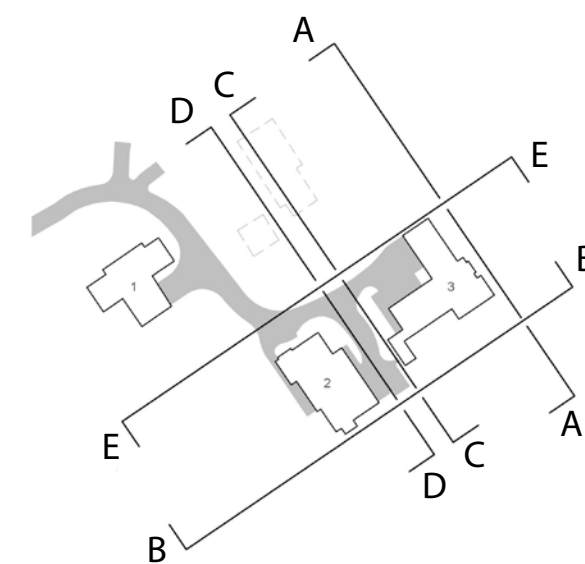
House 3 - South Elevation
1 : 100



House 3 - North Elevation
1 : 100



House 3 - West Elevation
1 : 100



Long Section BB, southeast boundary

Planning

This drawing has been prepared for workstages up to planning application purposes only and is not intended "for construction". The 'scale bar' should only be used to check the drawing has been reproduced to the correct size. No responsibility can be accepted for errors made by others in "scaling" from this drawing.

Tyack Architects Ltd own copyright of the original design work in the drawings, documents and digital files which cannot be copied, loaned or disclosed without written agreement. Please refer to our Standard Terms of Business.

Scale 1 : 200 10m



Copyright © Tyack Architects Ltd

Tyack Architects Ltd
The Mann Institute
Oxford Street
Moreton-in-Marsh
Gloucestershire, GL56 0LA

t: 01608 650 490
f: 01608 651 863
e: mail@tyackarchitects.com
w: tyackarchitects.com

PLANNING

Contextual Elevations 1

Yarnells Hill, Oxford, OX2 9BG

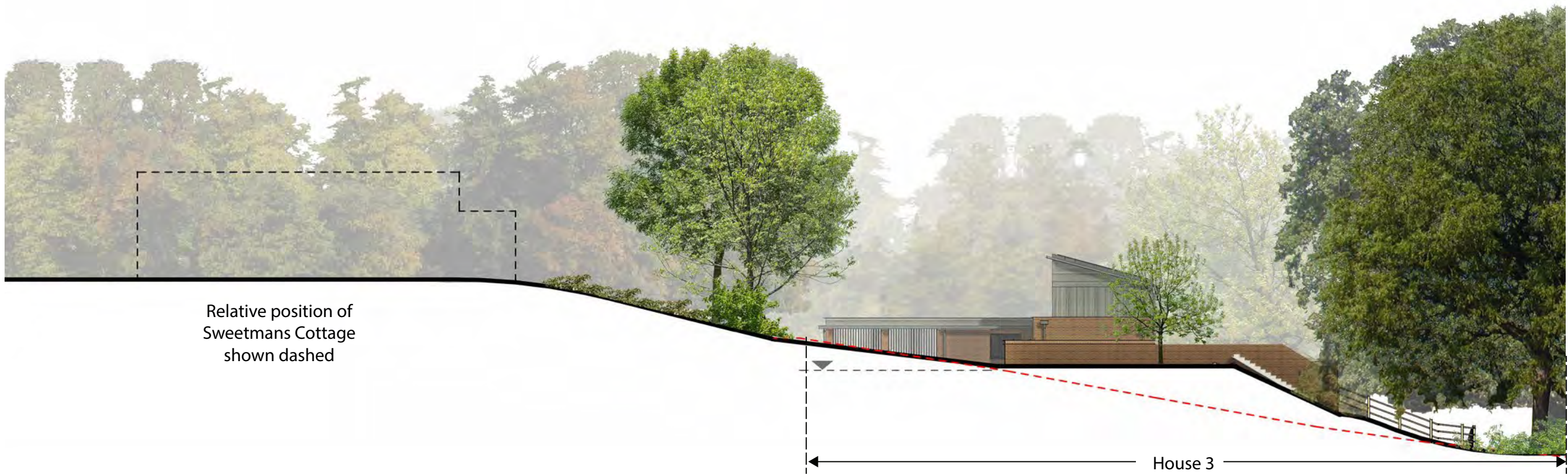
Jane Banfield

Scale: 1:200@A2

Drawn/Checked: JH/SC

Date: May 2020

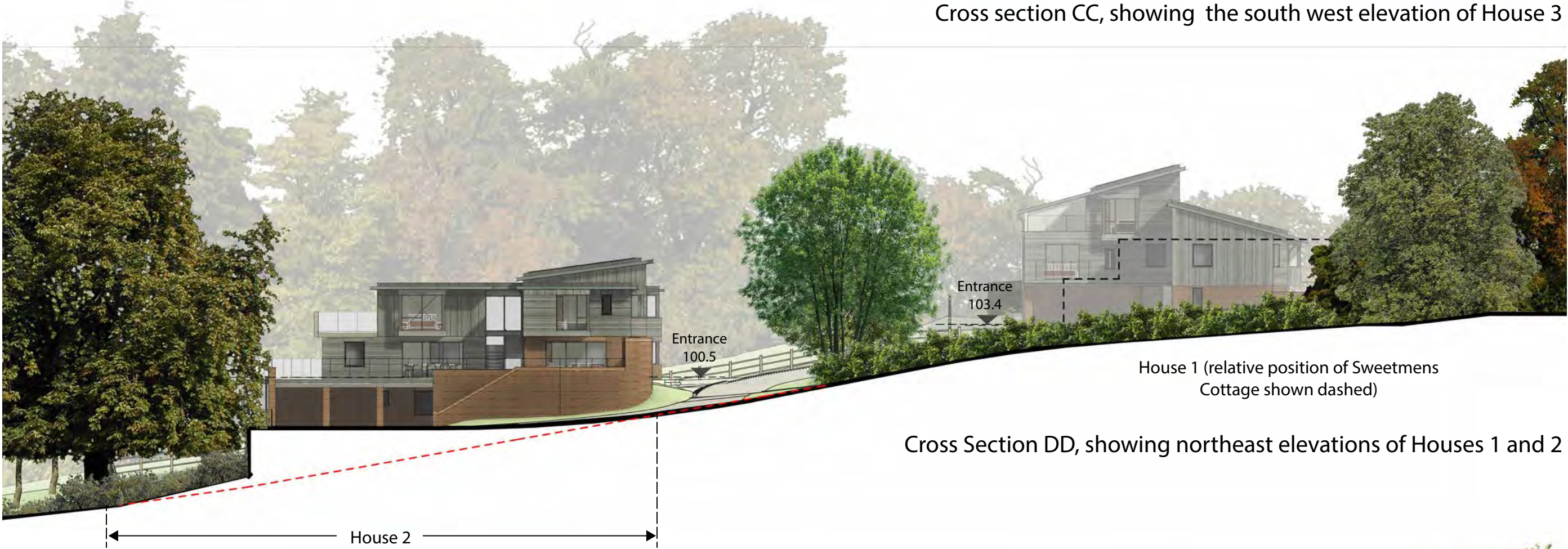
Drg No: 2869-PL-012 Rev:A



Relative position of
Sweetmans Cottage
shown dashed

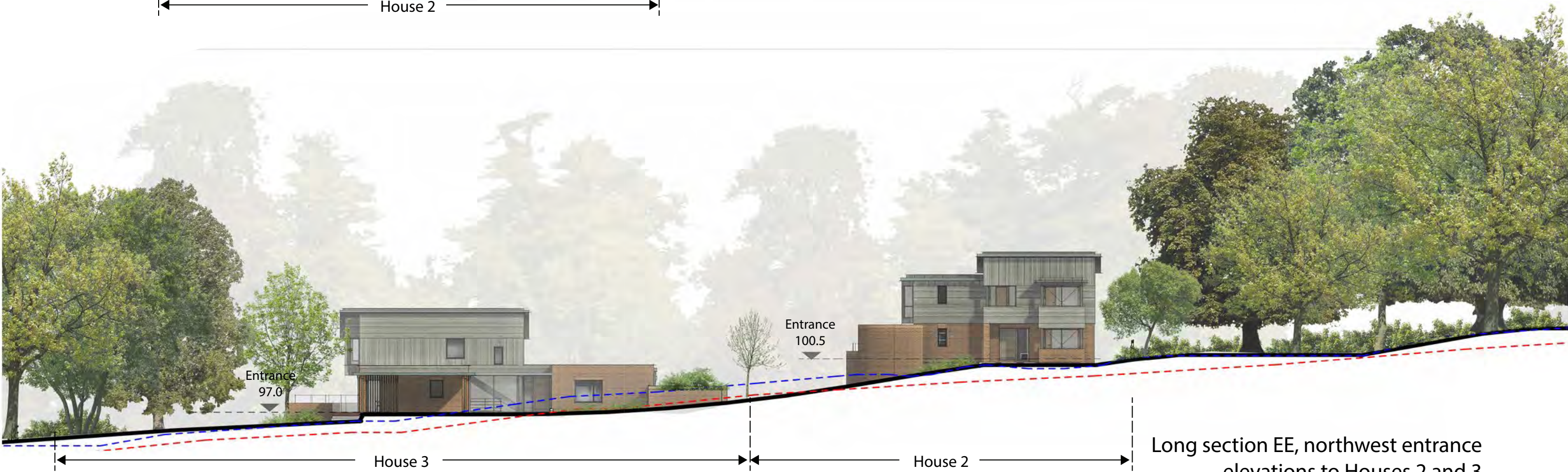
House 3

Cross section CC, showing the south west elevation of House 3

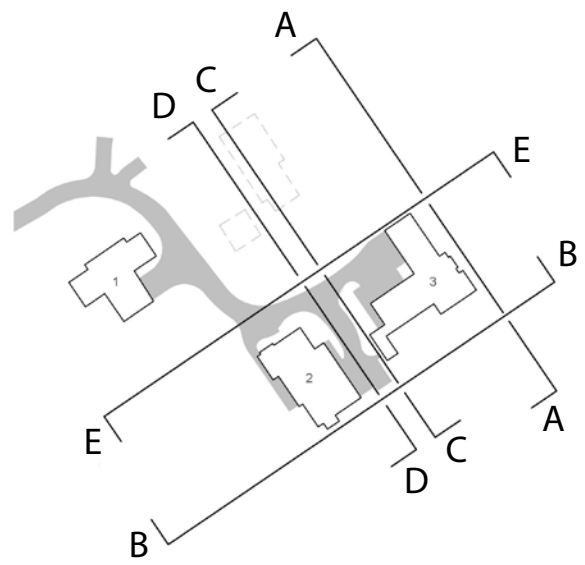


House 1 (relative position of Sweetmans
Cottage shown dashed)

Cross Section DD, showing northeast elevations of Houses 1 and 2



Long section EE, northwest entrance
elevations to Houses 2 and 3



Planning

This drawing has been prepared for workstages up to planning application purposes only and is not intended "for construction". The 'scale bar' should only be used to check the drawing has been reproduced to the correct size. No responsibility can be accepted for errors made by others in "scaling" from this drawing.

Tyack Architects Ltd own copyright of the original design work in the drawings, documents and digital files which cannot be copied, loaned or disclosed without written agreement. Please refer to our Standard Terms of Business.

Scale 1 : 200 10m



Copyright © Tyack Architects Ltd

Tyack Architects Ltd
The Mann Institute
Oxford Street
Moreton-in-Marsh
Gloucestershire, GL56 0LA

t: 01608 650 490
f: 01608 651 863
e: mail@tyackarchitects.com
w: tyackarchitects.com

PLANNING
Contextual Elevations 2
Yarnells Hill, Oxford, OX2 9BG
Jane Banfield
Scale: 1:200@A2
Drawn/Checked: JH/SC
Date: May 2020
Drg No: 2869-PL-013 Rev:A



Access Road Extract
1 : 200

Planning
This drawing has been prepared for workstages up to planning application purposes only and is not intended for construction. The scale bar should only be used to check the drawing has been reproduced to the correct size. No responsibility can be accepted for errors made by others in scaling from this drawing.

Tyack Architects Ltd own copyright of the original design work in the drawings, documents and digital files which cannot be copied, loaned or disclosed without written agreement. Please refer to our Standard Terms of Business.

Scale 1:200 10m

Legend
--- Root protection areas to existing tree
--- Demolished trees & hedges
--- Estimated proposed ground levels



Tyack Architects Ltd
The Mann Institute
Cotton Street
Merton-in-Marsh
Gloucestershire
GL56 6LA
t: 01608 650 400
f: 01608 651 863
e: info@tyackarchitects.com
w: tyackarchitects.com

Planning
Proposed Site Plan
Yarnells Hill, Oxford, OX2 9BG
Jane Banfield
Scale: 1 : 200@A1 Date: 12.03.2020
Drawn/Checked: JH/SCDrg No: 2869-PL-003

Rev: G